

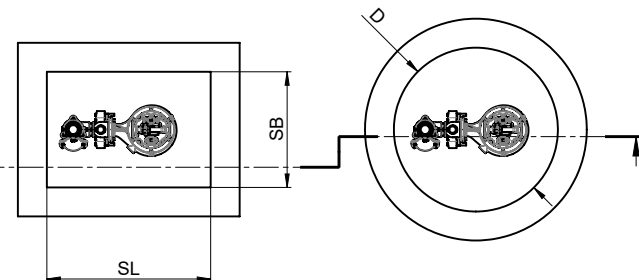
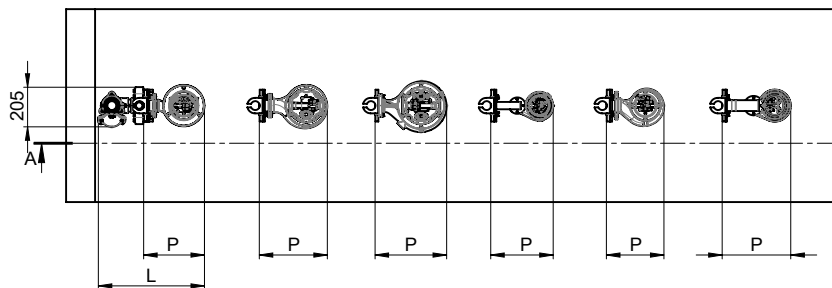
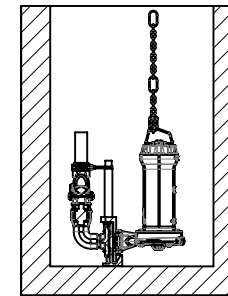
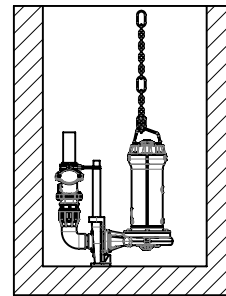
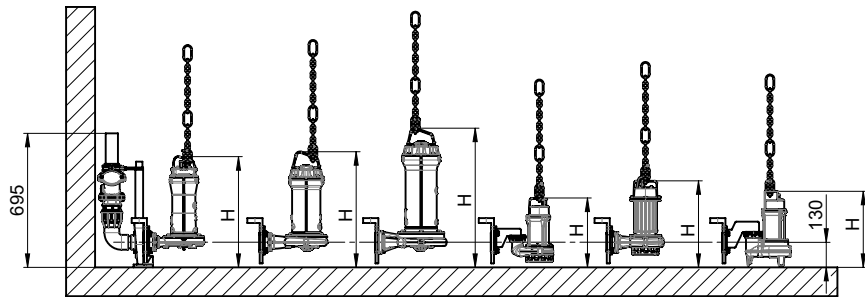
ACO Pumping set Powerlift-P mono ND 50



| | | | | | |
|-------------------------------------|-------------------------------------|-------------------------------------|------------------------------|----------------------------|---------------------------|
| ACO Sita200 N-EX-G 0178.64.30 | ACO Sita300 N-EX-G 0178.64.32 | ACO Sita550 N-EX-G 0178.64.33 | ACO Sat50/2/32 0178.12.76 | ACO Sat100/D 0178.12.80 | ACO SatV75 0178.12.83 |
| | | | ACO Sat75/2/32 0178.12.77 | ACO Sat150/D 0178.12.81 | ACO SatV150 0178.12.84 |
| | | | | ACO Sat200/D 0178.12.82 | |

recommended minimal
room of installation
ACO Powerlift Pumpenset
DN50 mono (rectangular)

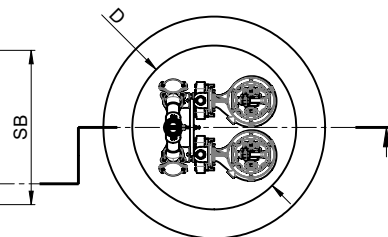
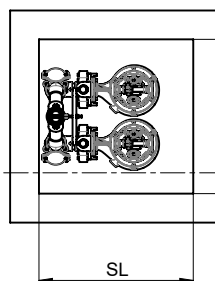
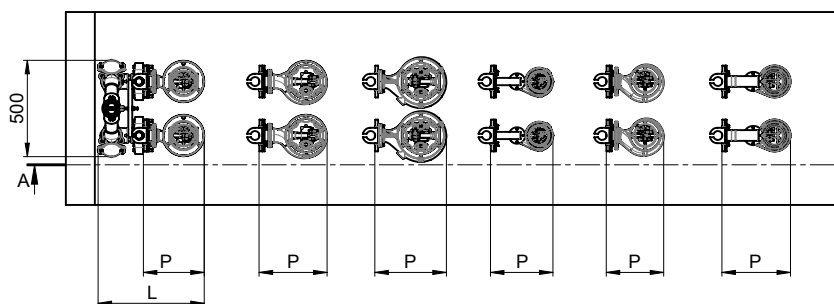
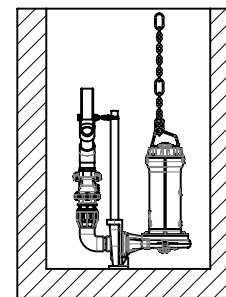
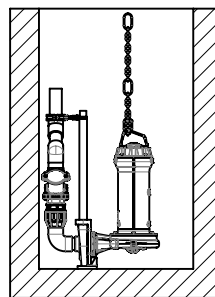
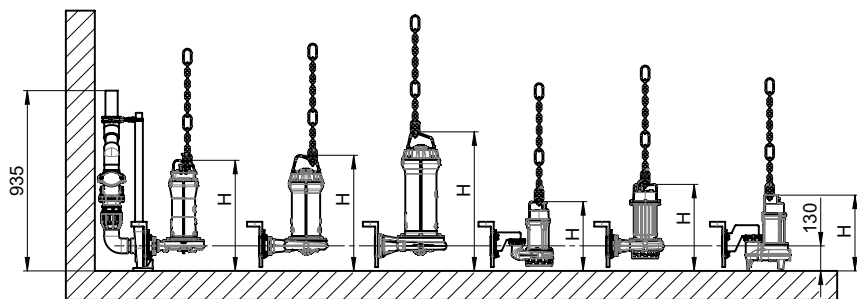
recommended minimal
room of installation
ACO Powerlift Pumpenset
DN50 mono (circular)



ACO Pumping set Powerlift-P duo ND 50



| | | | | | | |
|-------------------------------------|-------------------------------------|-------------------------------------|------------------------------|----------------------------|---------------------------|--|
| ACO Sita200 N-EX-G 0178.64.30 | ACO Sita300 N-EX-G 0178.64.32 | ACO Sita550 N-EX-G 0178.64.33 | ACO Sat50/2/32 0178.12.76 | ACO Sat100/D 0178.12.80 | ACO SatV75 0178.12.83 | recommended minimal room of installation ACO Powerlift Pumpenset DN50 duo (rectangular) |
| | | | ACO Sat75/2/32 0178.12.77 | ACO Sat150/D 0178.12.81 | ACO SatV150 0178.12.84 | |
| ACO Sat200/D 0178.12.82 | | | | | | recommended minimal room of installation ACO Powerlift Pumpenset DN50 duo (circular) |



ACO Pumping set Powerlift-P mono ND 100



ACO KL-AT-M 200-G
0178.64.34

ACO KL-AT-M 300-G
0178.64.35

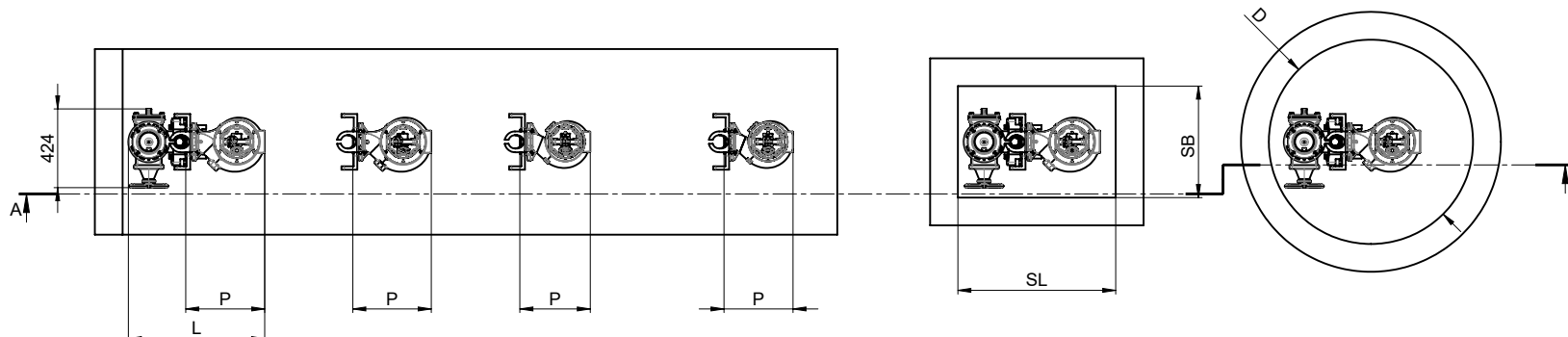
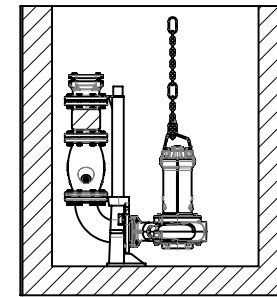
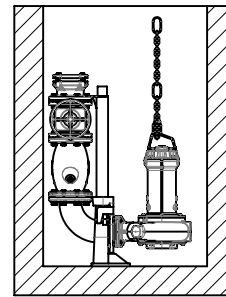
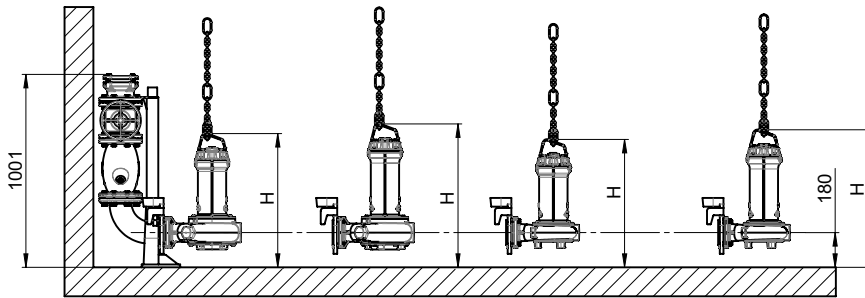
ACO SatQ 300-G
0178.64.40

ACO SatQ 400-G
0178.64.41

ACO KL-AT-M 400-G
0178.64.36

recommended minimal
room of installation
ACO Powerlift Pumpenset
DN100 mono (rectangular)

recommended minimal
room of installation
ACO Powerlift Pumpenset
DN100 mono (circular)



ACO Pumping set Powerlift-P duo ND 100



ACO KL-AT-M 200-G
0178.64.34

ACO KL-AT-M 300-G
0178.64.35

ACO SatQ 300-G
0178.64.40

ACO SatQ 400-G
0178.64.41

ACO KL-AT-M 400-G
0178.64.36

recommended minimal
room of installation
ACO Powerlift Pump kit
DN100 duo (square)

recommended minimal
room of installation
ACO Powerlift pump kit
DN100 duo (circular)

